

Curriculum Newsletter

Year 3 – Summer 2022



Glynnne Primary School

Our learning journey this term is Rainforest Adventure.

The children will explore the rainforests of the world and their environment.

As geographers we will

- locate world countries, with a focus on South America, and where rainforests are found across the world.
- Identify the position of latitude, longitude, Equator, Northern Hemisphere, Southern Hemisphere, the Tropics of Cancer and Capricorn
- Understand geographical similarities and differences through the study the UK and a region of South America (Amazon)
- Look at different types of settlement and land use.
- Complete an in depth study of the Amazon Rainforest.

As scientists we will:

- Identify and describe the functions of different parts of flowering plants:
- Explore the part that flowers play in the life cycle of flowering plants, including pollination, seed formation and seed dispersal.
- Explore the layers of the rainforest – types of plants/trees found at each layer
- Construct and interpret a variety of food chains, identifying producers, predators and prey.
- Recognise that environments can change and affect living things.
- Understand the effects of global warming and deforestation on the rainforest habitat.

English

Grammar

- To use punctuation accurately.
- To form nouns using a range of prefixes.
- Use of determiners such as a and an.
- Word families based on common words.

Writing

- Use appropriate grammar and vocabulary to create a narrative and description.
- Use simple organisational devices to create a variety of non-fiction pieces.
- Write poetry using emotive language.
- Expressing time and cause using conjunctions, adverbs and prepositions.
- Evaluate and edit writing and proposing changes.
- Improve the legibility, consistency and quality of handwriting.

Read your reading book every day and quiz regularly on Accelerated Reader to reach your points target each half term.

Maths

- Use multiples of 2, 3, 4, 5, 8, 10, 50 and 100.
- Add and subtract numbers with up to three digits, using mental and formal written methods.
- Recall and use multiplication and division facts for the 3, 4, 6 and 8 multiplication tables.
- Count in 6s, 7s, 9s, 11s, 12s.
- Connect 2, 4 and 8 x through doubling.
- Recognise and use fractions as numbers: unit fractions and non-unit fractions
- Add and subtract fractions with the same denominator within one whole.
- Read time to the nearest minute; use vocabulary such as o'clock, a.m./p.m., morning, afternoon, noon and midnight.
- Solve problems involving addition, subtraction, multiplication and division.

Practise times tables daily at home through TT Rock stars.

Children will focus on the statutory Year 3/4 spellings from the National Curriculum as well as spelling rules, applying them to their written work where appropriate.

Physical Education – Tuesday outdoor PE kits needed and cap, where appropriate.

- Games – Tennis, athletics and rounders.
- Swimming on a Friday.

Homework and take home tasks

Your child's homework will be set through **Purple Mash**. It will be uploaded on Wednesday and needs to be completed by the following Monday. Once completed, your child needs to upload their work to their homework folder on Purple Mash or hand it in the usual way if it is a 2Do. There will be a weekly spelling and maths task. We will be assessing your child's knowledge of their weekly spelling through different tasks and activities throughout the week.

Accelerated Reader – home reading book

Your child will continue to bring a home reading book home, please encourage them to read this book daily and to complete their quizzes on Accelerated Reader. It is important that you still listen to your child read regularly and spend time with your child talking about the text, identifying vocabulary and developing comprehension skills.

Times tables in phase 3/4

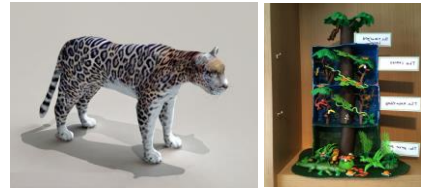
Children will be practising times tables daily in school. Please support your child at home to practise their times tables every day. Your child will have their log in for TT Rockstars, to access daily at home.

We ask the children to complete at least one take home task each term from the selection below. Once finished, this can be brought into school to be shared and displayed.

Create a rainforest food chain and present it as creatively as can.



Make a 3D rainforest animal or rainforest habitat.



Create your own rainforest map, be as creative as you can.



Create a fact file about a rainforest plant or animal.



Reproduce Henri Rousseau's painting entitled, "Tiger in a Tropical Storm."



Cook a recipe with rainforest ingredients, take a photo and bring it into school!



Rights Respecting Schools

Article 24

You have the right to clean, safe water to drink, nutritious food and a clean and safe environment to live.

Article 36

You have the right to protection from any kind of exploitation (being taken advantage of).

PSHE/RSE

Year 3 will be focusing on physical health and mental wellbeing, growing and changing and keeping safe.